



Technical Report No. 64.169.19.01075.01
Dated 2019-03-22

Client: Shenzhen Weichat Technology Co., Ltd.

Address: J Building, No.1 Tangming Road, Tangwei Community, Fenghuang Street, Guangming District, Shenzhen

Sample Description: Waterproof connectors

Model No.: EW-M25

Client reference information: According to declaration from client, the tested materials covered by the report were declared by the manufacturer to be used on: EW-M16, EW-M20, EW-M20T, EW-M25(1 in 2 out; 1 in 3 out; 1 in 4 out), EW-T03, EW-T02, EW-L02, EW-L03, EW-B02.

Sample Received Date: 2019-03-12

Test Period: From 2019-03-13 to 2019-03-22

Purpose of examination: Test according to RoHS (Restriction of Hazardous Substances) directive 2011/65/EU and its amendment (EU) 2015/863 on submitted samples

- Heavy Metal (Pb, Cd, Hg and Cr VI) Content **PASS**
- Polybrominated Biphenyls (PBBs) and Polybrominated Diphenyl Ethers (PBDEs) Content **PASS**
- Phthalates (DEHP, BBP, DBP and DIBP) Content **PASS**

Test Result: Refer to following page(s)

Remark: The result relates only to the items tested.

TÜV SÜD Certification and Testing (China) Co., Ltd. Guangzhou Branch
 TÜV SÜD Group

Prepared by:

Reviewed by:

Allen Luo



Kevin Zhang

Allen Luo
Project Handler


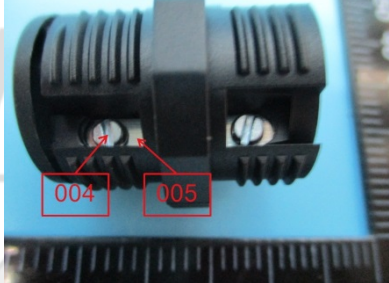
Kevin Zhang
Designated Reviewer

This technical report may only be quoted in full. Any use for advertising purposes must be granted in writing. This report is the result of a single examination of the object in question and is not generally applicable evaluation of the quality of other products in regular production.

TÜV SÜD Certification and Testing (China) Co., Ltd. Guangzhou Branch
 TÜV SÜD Group
 5F, Communication Building, 163 Pingyun Rd, Huangpu West Ave.
 Guangzhou 510656, P.R. China

Tel.: (86) 20 38320668
 Fax: (86) 20 38320478

1. TESTED SUBJECT DESCRIPTION

Sample Number	Tested Material Description	Photo
001	Black plastic shell	
002	Yellow soft plastic washer	
003	Green soft plastic ring	
004	Light blue metal screw	
005	Silvery metal nut	

2. TEST RESULTS

2.1. HEAVY METAL CONTENT

Test method: With reference to EN 62321-4:2017, EN 62321-5:2014, EN 62321-7-1:2015 and EN 62321-7-2:2017, analyzed by Inductively Coupled Plasma Optical Emission Spectrometer (ICP-OES) and UV-Vis spectrophotometer. [Reporting Limit: 2 mg/kg for Cadmium; 10 mg/kg or 0.10 $\mu\text{g}/\text{cm}^2$ for Hexavalent Chromium, 10 mg/kg for Lead and Mercury.]

Sample No.	Result [mg/kg]			
	Total Cadmium	Hexavalent Chromium	Total Mercury	Total Lead
001	<2	<10	<10	<10
002	<2	<10	<10	<10
003	<2	<10	<10	<10
004	<2	Negative	<10	<10
005	9	Negative	<10	26200 ^(a)
RoHS Requirement	100	1000	1000	1000

Note:

- “mg/kg” denotes milligram per kilogram
- “<” denotes less than
- “ $\mu\text{g}/\text{cm}^2$ ” denotes micrograms per square centimeter
- “Negative” denotes the absorbance value of sample is less than the absorbance value of the 0.10 $\mu\text{g}/\text{cm}^2$ equivalent comparison standard solution, the sample is considered to be negative for Hexavalent Chromium.
- “(a)” denotes the exempt item according to DIRECTIVE 2011/65/EU Annex III item 6(c) “Copper alloy containing up to 4 % lead by weight”.

2.2. POLYBROMINATED BIPHENYLS (PBBs) AND POLYBROMINATED DIPHENYL ETHERS (PBDEs) CONTENT

Test Method: With reference to EN 62321-6:2015, extracted by toluene and analyzed by Gas Chromatography and Mass Spectrometry (GC-MS). [Reporting Limit: 5 mg/kg]

Test Item		Result [mg/kg]		RoHS Requirement [mg/kg]
		Sample 001	Sample 002	
PBBs	Monobromobiphenyl	< 5	< 5	Sum of PBBs 1000
	Dibromobiphenyl	< 5	< 5	
	Tribromobiphenyl	< 5	< 5	
	Tetrabromobiphenyl	< 5	< 5	
	Pentabromobiphenyl	< 5	< 5	
	Hexabromobiphenyl	< 5	< 5	
	Heptabromobiphenyl	< 5	< 5	
	Octabromobiphenyl	< 5	< 5	
	Nonabromobiphenyl	< 5	< 5	
	Decabromobiphenyl	< 5	< 5	
	Sum of PBBs	< 5	< 5	
PBDEs	Monobromodiphenyl Ether	< 5	< 5	Sum of PBDEs 1000
	Dibromodiphenyl Ether	< 5	< 5	
	Tribromodiphenyl Ether	< 5	< 5	
	Tetrabromodiphenyl Ether	< 5	< 5	
	Pentabromodiphenyl Ether	< 5	< 5	
	Hexabromodiphenyl Ether	< 5	< 5	
	Heptabromodiphenyl Ether	< 5	< 5	
	Octabromodiphenyl Ether	< 5	< 5	
	Nonabromodiphenyl Ether	< 5	< 5	
	Decabromodiphenyl Ether	< 5	< 5	
	Sum of PBDEs	< 5	< 5	

Note:

- “mg/kg” denotes milligram per kilogram
- “<” denotes less than

Technical Report No. 64.169.19.01075.01
Dated 2019-03-22

Test Item		Result [mg/kg]	RoHS Requirement [mg/kg]
		Sample 003	
PBBs	Monobromobiphenyl	< 5	Sum of PBBs 1000
	Dibromobiphenyl	< 5	
	Tribromobiphenyl	< 5	
	Tetrabromobiphenyl	< 5	
	Pentabromobiphenyl	< 5	
	Hexabromobiphenyl	< 5	
	Heptabromobiphenyl	< 5	
	Octabromobiphenyl	< 5	
	Nonabromobiphenyl	< 5	
	Decabromobiphenyl	< 5	
	Sum of PBBs	< 5	
PBDEs	Monobromodiphenyl Ether	< 5	Sum of PBDEs 1000
	Dibromodiphenyl Ether	< 5	
	Tribromodiphenyl Ether	< 5	
	Tetrabromodiphenyl Ether	< 5	
	Pentabromodiphenyl Ether	< 5	
	Hexabromodiphenyl Ether	< 5	
	Heptabromodiphenyl Ether	< 5	
	Octabromodiphenyl Ether	< 5	
	Nonabromodiphenyl Ether	< 5	
	Decabromodiphenyl Ether	< 5	
	Sum of PBDEs	< 5	

Note:

- “mg/kg” denotes miligram per kilogram
- “<” denotes less than

2.3. PHTHALATES CONTENT TEST

Test method: With reference to EN 62321-8:2017, extracted by organic solvent and analyzed by Gas Chromatography and Mass Spectrometry (GC-MS). [Reporting limit: 100 mg/kg]

Test Item	Result [mg/kg]		RoHS Requirement [mg/kg]
	Sample 001	Sample 002	
Di-(2-ethyl-hexyl) Phthalate (DEHP)	< 100	< 100	1000
Butyl-benzyl Phthalate (BBP)	< 100	< 100	1000
Di-butyl Phthalate (DBP)	< 100	< 100	1000
Di-iso-butyl Phthalate (DIBP)	< 100	< 100	1000

Test Item	Result [mg/kg]	RoHS Requirement [mg/kg]
	Sample 003	
Di-(2-ethyl-hexyl) Phthalate (DEHP)	< 100	1000
Butyl-benzyl Phthalate (BBP)	< 100	1000
Di-butyl Phthalate (DBP)	< 100	1000
Di-iso-butyl Phthalate (DIBP)	< 100	1000

Note:

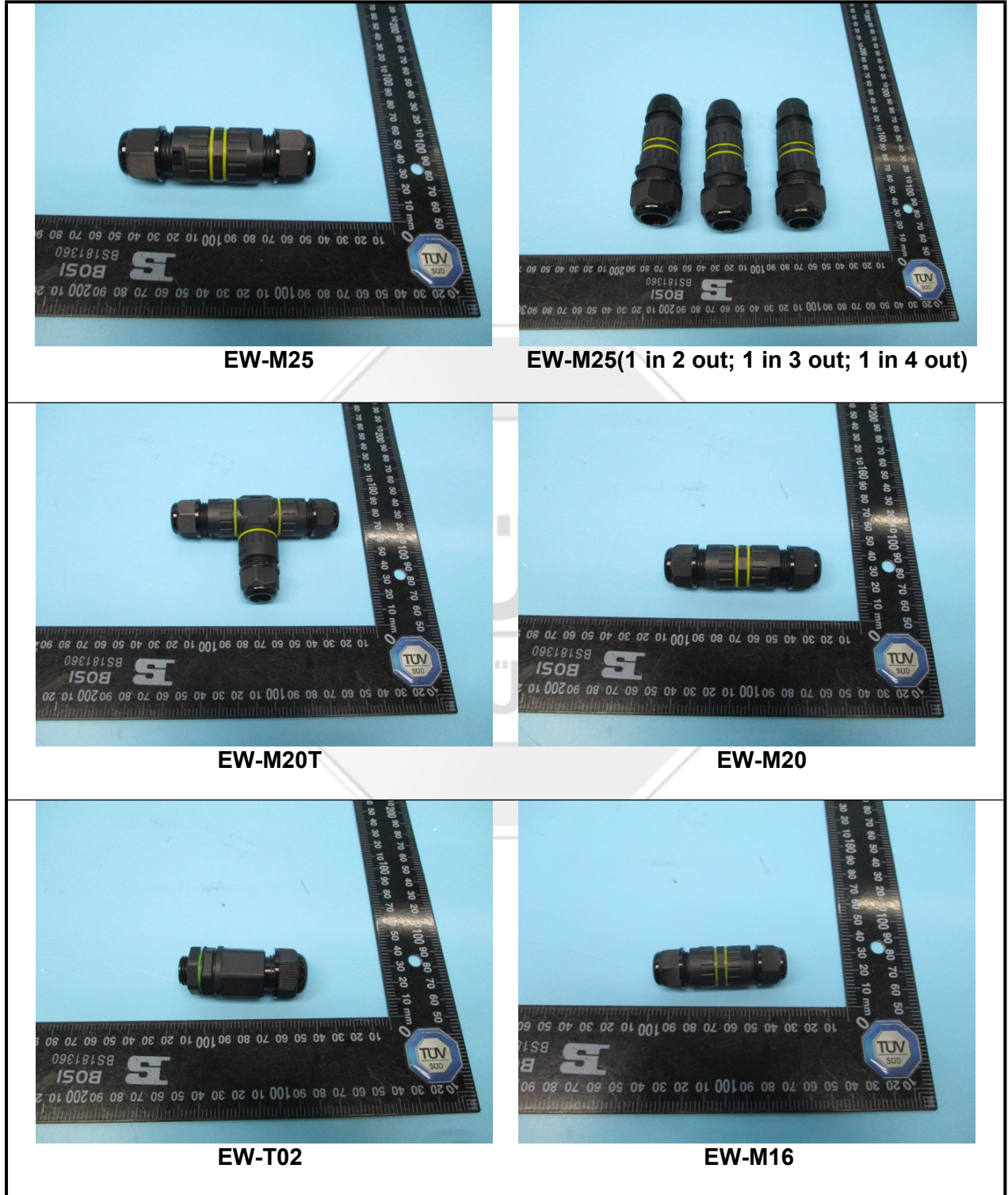
- “mg/kg” denotes miligram per kilogram
- “<” denotes less than

3. REMARK

The chemical testing was performed in TÜV SÜD Certification and Testing (China) Co., Ltd. Shenzhen Branch Chemical lab and the test results were reviewed at TÜV SÜD Certification and Testing (China) Co., Ltd. Guangzhou Branch.

APPENDIX I:

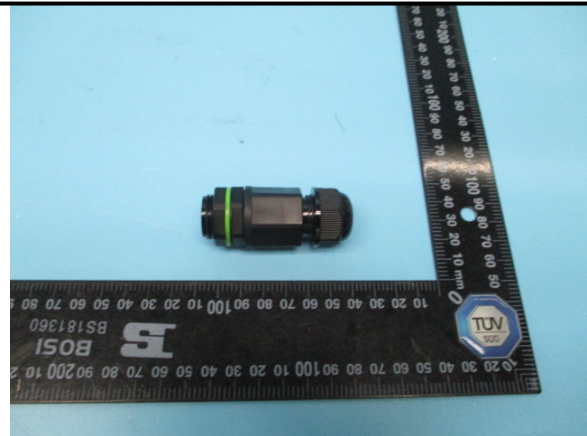
Photos of submitted products



Technical Report No. 64.169.19.01075.01
Dated 2019-03-22



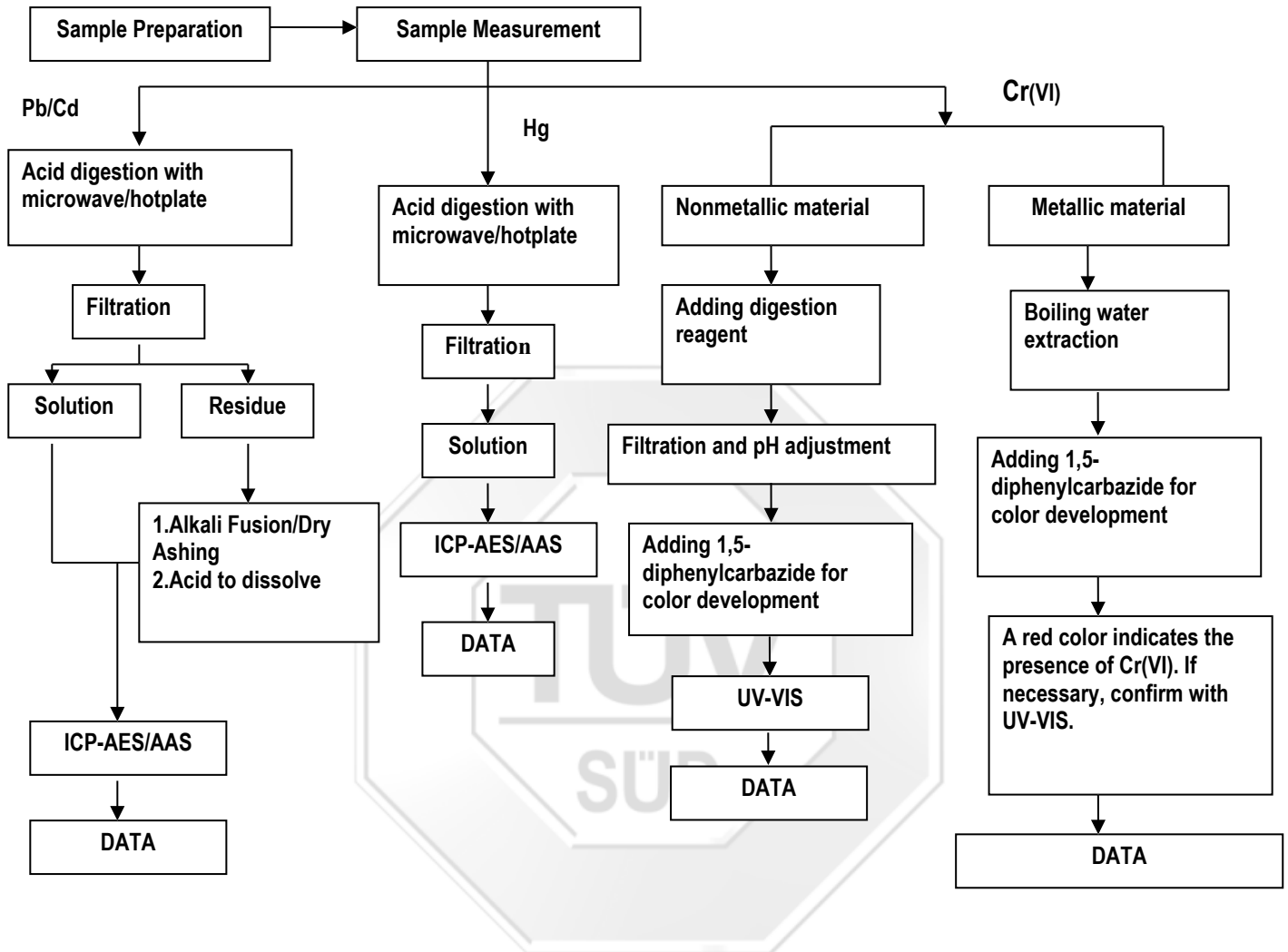
EW-L02, EW-L03



EW-T03



Appendix II RoHS Testing Procedure Flowchart



These sample were dissolved totally by pre-conditioning method according to above flow chart(Cr(VI) test method excluded)

PBBs/PBDEs, Phthalates

